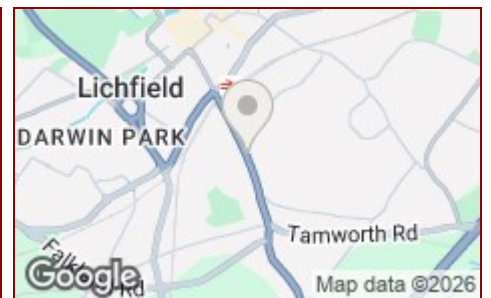


£975 PCM

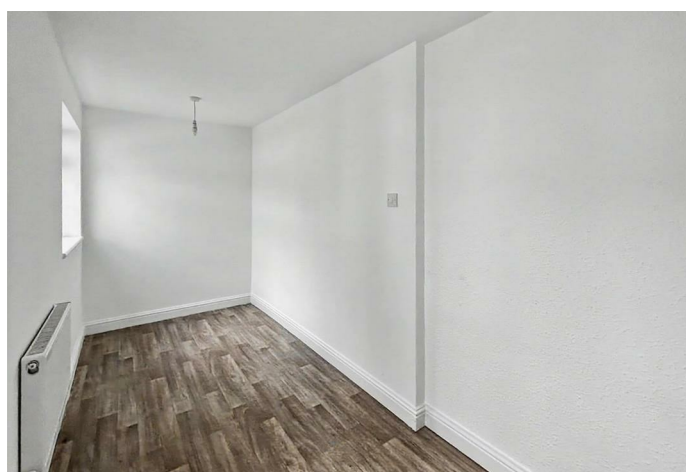
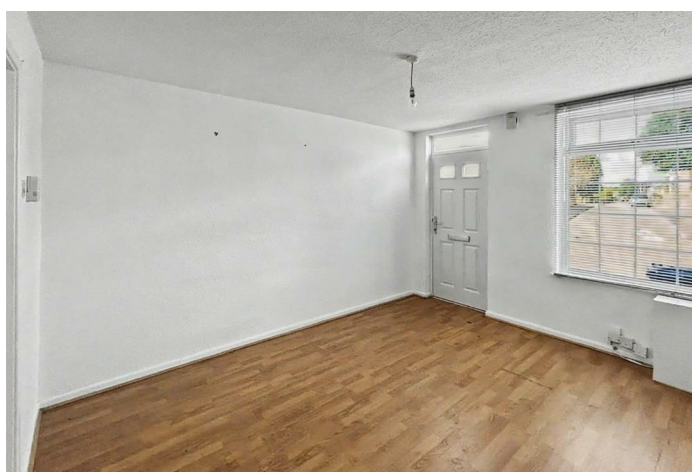
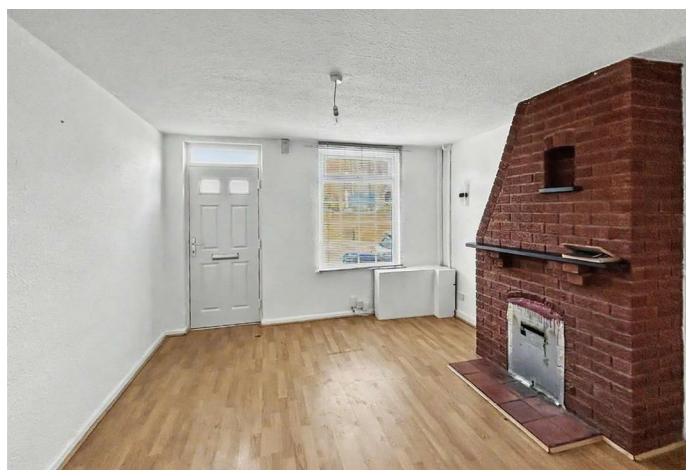


Upper St. John Street, Lichfield, Staffordshire WS14 9EA

£975 PCM

- Two Bedrooms
- Lounge/diner
- Cellar
- Council Tax B
- Close to all Lichfield Centre
- Bathroom
- Kitchen
- Private courtyard
- EPC D
- Available July 2026

REQUIRE A MORTGAGE? Our independent advisor can compare "whole of market" to help find the best mortgage to suit your circumstances. Please call 01543 417 559 for a free mortgage quote including some deals only available through our network. **AGENTS DESCRIPTIONS** These details imply the opinion of the agent at the time these details were prepared and are subjective. It may be that the tenant's opinion may differ. **VIEWING ARRANGEMENTS** By appointment only with Jayman on 01543 417 559 **COUNCIL TAX** Please refer to www.voa.gov.uk for this information. **DESCRIPTIONS AND MEASUREMENTS** All measurements are approximate and some may be maximum on irregular walls. The plan shows the approximate layout of the rooms to show the inter relationship of relationship of one room to another but is not necessarily to scale. **CONSENTS** We have not had sight of any relevant building regulations, guarantees or planning consents and all relevant documentation pertaining to this property should be checked by your legal advisor before exchanging contracts.



Energy Efficiency Rating		
	Current	Potential
Very energy efficient - lower running costs		
(92 plus) A		
(81-91) B		
(69-80) C		
(55-68) D		
(39-54) E		
(21-38) F		
(1-20) G		
Not energy efficient - higher running costs		
		85
	63	

Environmental Impact (CO ₂) Rating		
	Current	Potential
Very environmentally friendly - lower CO ₂ emissions		
(92 plus) A		
(81-91) B		
(69-80) C		
(55-68) D		
(39-54) E		
(21-38) F		
(1-20) G		
Not environmentally friendly - higher CO ₂ emissions		